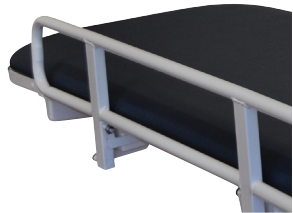




Folds up for space saving



Drop down safety rail



Remote Infra red handset



**‘MANUFACTURED TO EXCEED
AUSTRALIAN STANDARDS’**

The MONTAR fold-up exam couch will introduce space saving efficiencies and integrate seamlessly into your facilities. The MONTAR incorporates Linak's state of the art actuator to achieve a 350mm low height and 950mm high height for ergonomic transfer of the patient from couch to stretcher. With industry grade upholstery and the frame is treated with an anti-bacterial polyester powder coating.

CALL **1300 444 600**

- Electric Hi/Low
- Wall Mounted
- Standard Blue Padded Vinyl Top (Beige optional)
- Anti-Bacterial Polyester Powder Coating
- Battery Backup
- Infra red handset
- Drop Safety Rail
- SWL **200kg**
- Low Position - 350mm
- High Position - 950mm
- Overall Width - Closed 350mm Open 1030mm
- Overall Length - 1880mm
- Sleeping Surface - 1880 x 700mm



MONTAR MAINTENANCE

No specialist trades are required for servicing or repairs; existing building maintenance staff or local handymen will be supported via Alrick Technical Support on 1800 282 001. The MONTAR is designed with modular components; if one component fails, maintenance costs are reduced with the replacement of components only, versus the whole unit.

APPLICATIONS

- First Aid
- Disabled Assistance
- Sports Injuries
- Medical Assessments
- Medical Treatment
- Examinations
- Training

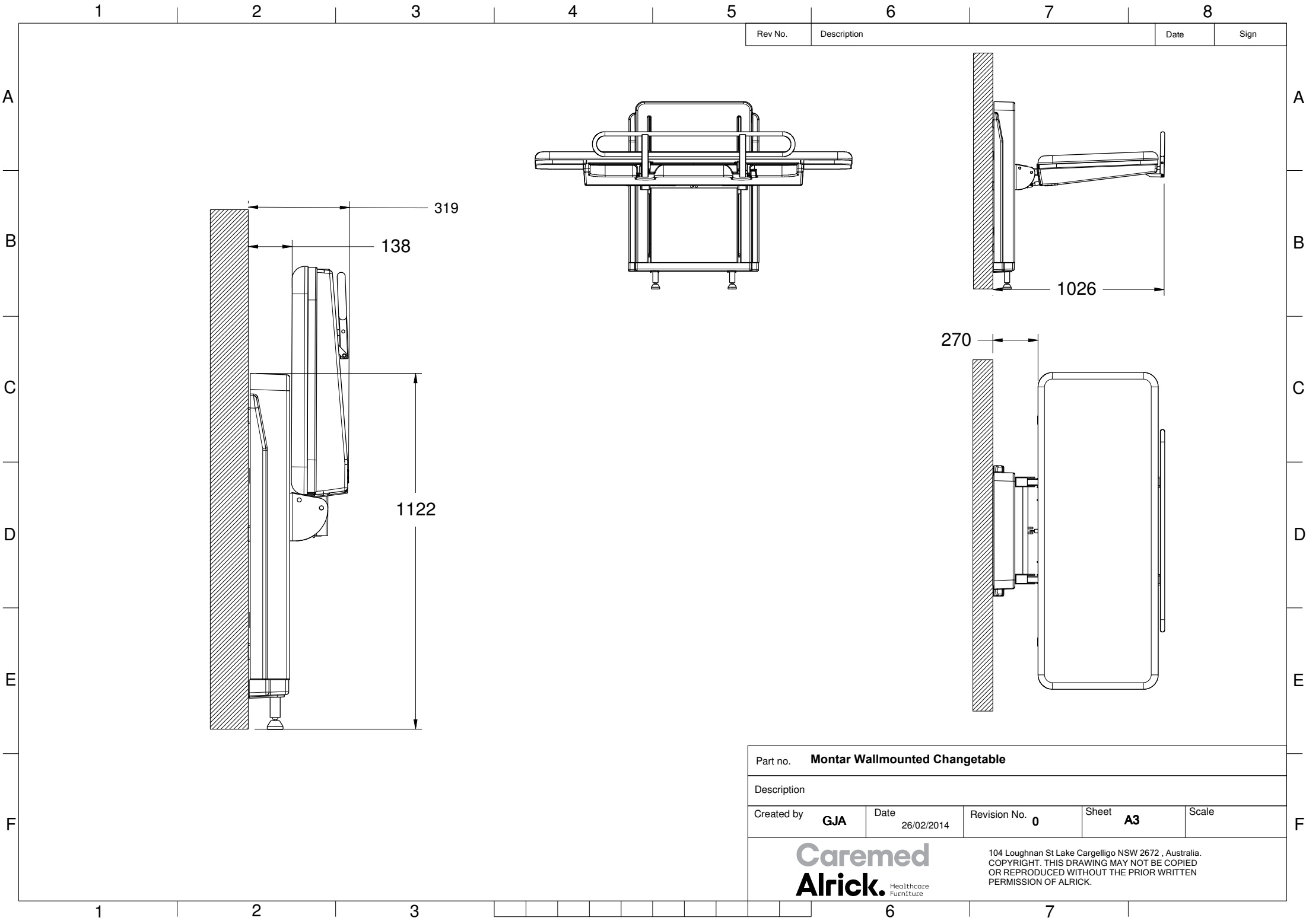



Para Mobility
Making everyday living easier since 1983

Unit 31 276-278 New Line Road Dural NSW 2158

P 1300 444 600 **E** sales@paramobility.com.au

www.paramobility.com.au



Rev No.	Description	Date	Sign
---------	-------------	------	------

Part no. Montar Wallmounted Changetable				
Description				
Created by GJA	Date 26/02/2014	Revision No. 0	Sheet A3	Scale
Caremed Alrick. Healthcare Furniture		104 Loughnan St Lake Cargelligo NSW 2672 , Australia. COPYRIGHT. THIS DRAWING MAY NOT BE COPIED OR REPRODUCED WITHOUT THE PRIOR WRITTEN PERMISSION OF ALRICK.		



Caremed Alrick.

Caremed Standards

Beds

Caremed Alrick Beds are manufactured in accordance with Australian Standards

- IEC60601-2-52

Mattresses

Mattress foam is manufactured to comply with the below standards;

- Compliant with GECA Standards

TGA Numbers

Beds – 192062

StandEzy – 276940

331761

Rails – 217347

Total Air –

Accessories – 314321